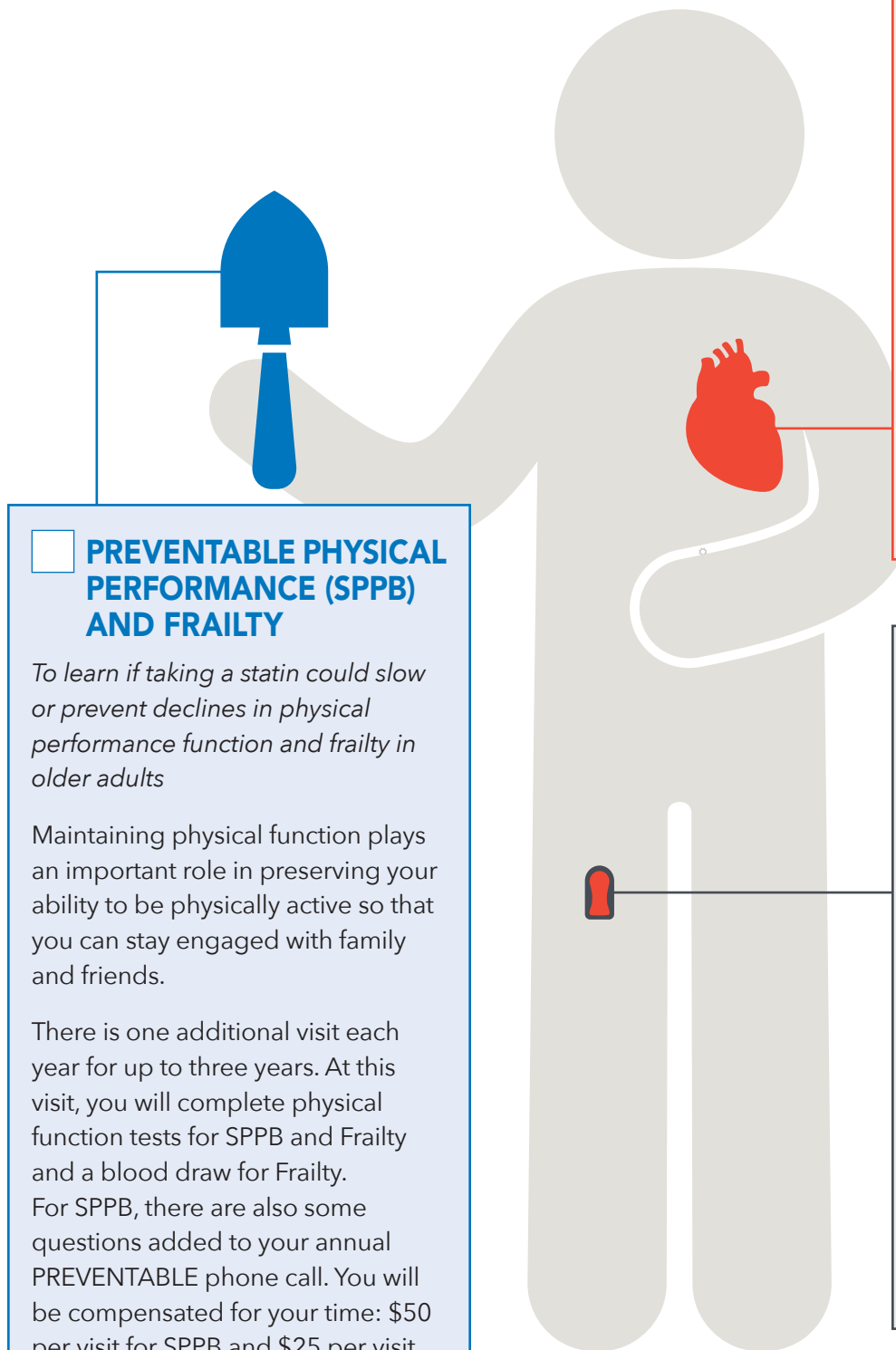


PREVENTABLE Ancillary Studies

As a PREVENTABLE participant, we invite you to learn more about other studies related to the main PREVENTABLE Study. If your local site is participating, you will be provided more information about each study and may be asked to sign a separate consent form.



PREVENTABLE PHYSICAL PERFORMANCE (SPPB) AND FRAILITY

To learn if taking a statin could slow or prevent declines in physical performance function and frailty in older adults

Maintaining physical function plays an important role in preserving your ability to be physically active so that you can stay engaged with family and friends.

There is one additional visit each year for up to three years. At this visit, you will complete physical function tests for SPPB and Frailty and a blood draw for Frailty. For SPPB, there are also some questions added to your annual PREVENTABLE phone call. You will be compensated for your time: \$50 per visit for SPPB and \$25 per visit for Frailty, for a total of \$75 per visit for both studies.

CORONARY ARTERY CALCIUM (CAC) PREVENTABLE

To determine if calcium in the heart can guide treatment for heart disease

Calcium in the blood vessels of the heart reflects your body's response and ability to recover from disease over your lifetime. A heart scan can reveal the effects of aging on blood vessels in your heart and your body.

There is one additional in-person visit for this study. You will have a heart scan performed. You will be compensated \$50 for your time.

PREVENTABLE—SITTING TIME AND DEMENTIA (STAND)

To look at the relationship between sitting (sedentary behavior) and dementia in older adults

Sedentary behavior is defined as spending most of your awake time in seated or lying positions. The impact of sedentary behavior on dementia is unknown.

There are three additional visits over the phone or by video call for this study. You will be asked to wear an activity monitor for seven days. You will be compensated \$30 for each completed visit for your time.



PREVENTABLE